



EVERGREEN AREA Chamber of Commerce

December 2020 Newsletter



1524 Belford Court
Evergreen, 80439
(303) 674-3412
EvergreenChamber.org

Catalyst

for Business
growth

Convener

of leaders
And
influencers

Champion

for a strong
community

Thank You Members Chairman's Circle



Partner



Executive

- Wander Unlimited
- The Wild Game
- SEO Forensic Marketing
- Valli Crocket / Bergen Peak Realty
- RPM Agency Insurance Brokerage
- Jefferson Center
- Higher Ground Cleaning Services
- Frozen Fire
- Evergreen National Bank
- Evergreen Gallery
- Evergreen CPAs LLC
- Echo Mountain
- Caldwell Insurance Agency Inc. - American Family
- Brown Contracting & Remodel
- Big O Tires Evergreen
- Bear Paw Painters
- Bear Creek Design Group
- AlphaPixel Reach



The holiday season is upon us and things feel different this year. As they have all year long. Many of us are not gathering with family or traveling across state lines to visit loved ones and we can all feel the void.

Our focus is closer to home and we find ourselves connecting more with our neighbors and community. With eyes wide open, we are keenly aware of the loss within our little town and surrounding areas and are searching for ways that we can help.

Our community is comprised of small business owners and the people who work there. Restaurants, retail shops, salons, and gyms are all suffering and fighting for

survival.

While we are unable to join our distant family and friends this holiday season, we can spread the love here. In Evergreen. As the Chamber President, I have the pulse on the heartbeat of the businesses in our community, and they need you now.

Please consider spending your holiday dollars locally. Every dollar counts to your neighbors. The parents of the kids your kids go to school with. The tired eyes hiding behind masks at the grocery store. The person worshipping near you at church. They will all benefit, keeping our local economy alive.

With the vaccine on the horizon, we can see the light at the end of this tunnel. However, it is still a very long tunnel. If we don't bind together as a community and step up and take care of each other there may be a lot of our favorite businesses and restaurants that won't be around at the end of the tunnel.

Less big box stores — More small retail

Less chain restaurants — More local fare

Less Prime — More curbside pickup

Your purchase DOES NOT make a difference to the CEO of a major retailer, but it means the world to your friends and neighbors. Let's come together, Evergreen, and hold each other up.

Have a safe and happy holiday season,

Nancy Judge
President/CEO

Evergreen Area Chamber of Commerce

president@evergreenchamber.org | (303) 674-3412



Jeffco Safer At Home Level Red

LEVEL RED: SEVERE RISK



GUIDELINES AND RESTRICTIONS



P-12 Schools

P-5 in person suggested, or hybrid or remote as appropriate; Middle school in-person, hybrid, or remote suggested; High school hybrid or remote suggested



Group Sports & Camps

Virtual, or outdoors in groups less than 10



Higher Education

Remote suggested, limited in-person when necessary



Critical & Non Critical Retail

50% with increased curbside pick up, and delivery. Dedicated senior and at-risk hours encouraged.



Places of Worship

INDOOR UNSEATED: 25%, 50 (with calculator)
INDOOR SEATED: 25%, 50 person capacity
OUTDOORS: 6ft between parties outdoors, per local zoning



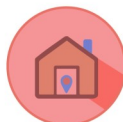
Personal Services

25% capacity or 25 people



Restaurants

INDOORS: Dining closed, take out, curbside, delivery, or to go
OUTDOORS: Open air with only groups of own household is open



Indoor Events & Entertainment

UNSEATED: Closed
SEATED: Closed



Offices

10%, Remote work is strongly encouraged



Outdoor Events & Entertainment

UNSEATED: 25%, 75 people (with calculator), attended only with members of your own household and 6ft spacing between groups
SEATED: 25%, 75 people (6ft distancing between parties), attended only with members of your own household and 6ft spacing between groups



Bars

Closed



Gyms/Fitness

10%, 10 indoors per room, or outdoors in groups less than 10. Reservations required



Outdoor Guided Services

25% capacity or 10 people

As of November 20, Jeffco has entered Level Red: Stay at Home.

We understand the difficulties this level causes for businesses and have been working hard to help ease the impact.

A link to all the information you need for your business is below along with the graphic explaining the guidelines and restrictions. Indoor dining is restricted to takeout and curbside delivery. Retail is decreased to 50% and curbside pickup and delivery.

Please review and reach out if there is anything I can share with the task force. This group includes Jefferson County Public Health officials, Jefferson County Commissioners, Economic Development staff, as well as Chamber leaders. My role is to advocate and pass along information between the business community and county officials. If you have questions or concerns, feel free to reach out to me so that I may share them.

Nancy Judge
president@evergreenchamber.org

covid19.colorado.gov/data/covid-19-dial

LEVEL RED / STAY AT HOME — SEVERE —

Does your county qualify for this level?

>15%
More than 15%
positivity rates

The percent positivity is defined as the percent of tests that come back positive, out of the total number of tests performed. The global standard to ensure that we are doing enough testing is a percent positivity of less than 5%.

350+
— cases per —
100,000

The 2-week incidence, per 100,000 population, helps us understand how much the virus is circulating in a community. This is the number of cases for every 100,000 people in the past two weeks.

**Greater than
2 NEW**
Covid-19 hospital
admissions per day

One of our key goals is to ensure that every person who needs hospital care can receive it. This metric ensures that there is sufficient hospital capacity available. Stable is defined as no greater than a 25% increase in the county's referral hospitals or no more than 2 new hospital admissions with COVID-19 on a single day, in the past 14 days.



COVID-19 vaccine

Scientists have developed several possible vaccines to provide immunity to COVID-19. The pharmaceutical companies Pfizer and Moderna have applied for an Emergency Use Authorization with the FDA, and Colorado expects that we will receive the vaccine as soon as mid-December. The companies report that both vaccines are around 95% effective.

The initial supply of vaccines will be very limited and will be distributed in a swift, fair, and efficient way. To slow the spread for everyone, we need to prioritize the highest risk health care workers and Coloradans who are most at risk for getting severely sick or even dying of COVID-19.

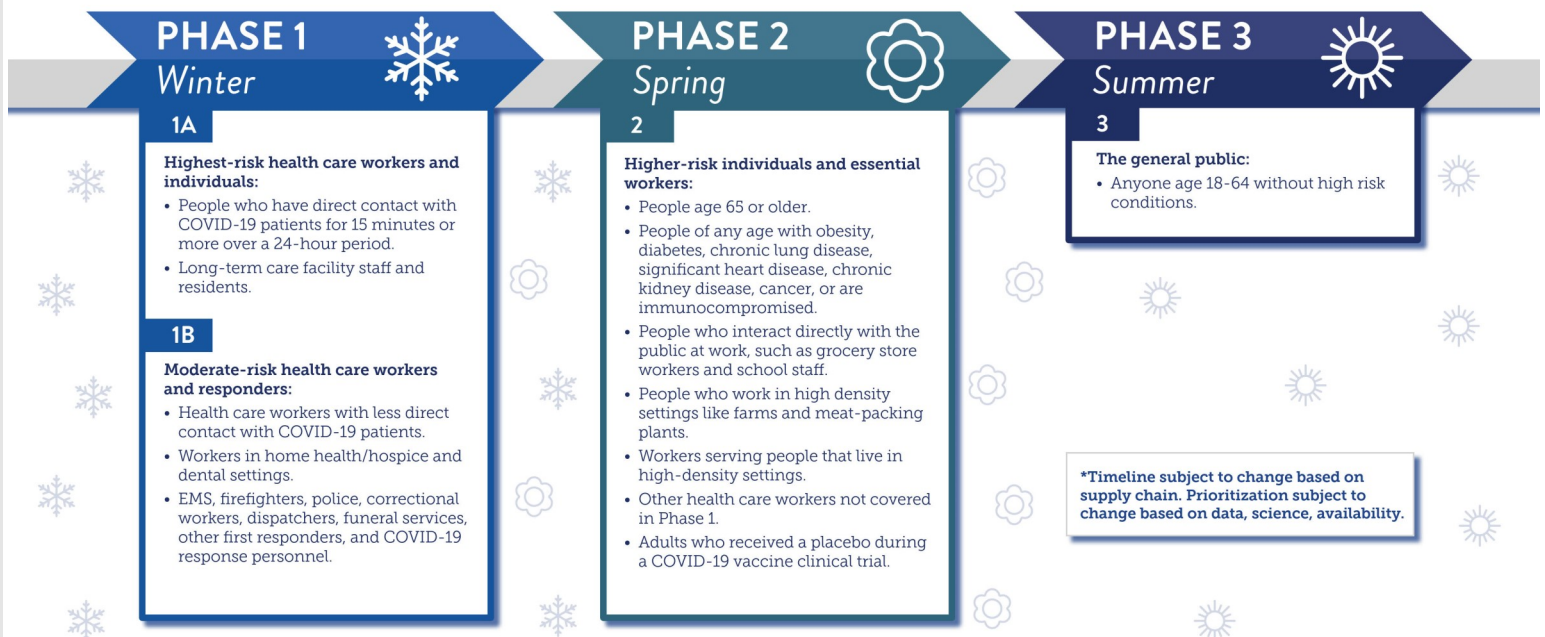
Until the vaccine is widely available, we will all need to continue to follow critical public health protocols. Please wear a mask in public, maintain at least 6 feet of distance from others, avoid gatherings, wash your hands often, and stay home when you are sick.

We expect that the initial supply of COVID-19 vaccine(s) will be very limited for several months. This means that a vaccine will not be immediately available to everyone who wants one. To be as fair and efficient with distribution as possible, the state has developed a phased approach to vaccine distribution to save lives and end the crisis that has been brought on by the pandemic as quickly as possible. By vaccinating people who are most likely to get COVID-19 first, we can keep more Coloradans safe.

View the [list of facilities](#) that will receive the first two shipments of COVID-19 vaccines (only for frontline health care workers). ([Español](#))

When can I get vaccinated?

Colorado is currently preparing to vaccinate eligible Coloradans for Phase 1A and will move into Phases 1B subsequently. After all of Phase 1 is complete, we will proceed with Phase 2 and 3.



Note: CDPHE recognizes the Tribal sovereignty of the Ute Mountain Ute and Southern Ute Indian Tribes, and that the Tribes have the authority to determine how vaccine supply will be prioritized for their populations, even if their prioritization scheme is different than what CDPHE recommends. Federal entities such as the Bureau of Prisons, Department of Defense, Department of State, Veteran's Hospital Association, and Indian Health Services will be vaccinated by the federal government. Children and pregnant people are not included in this preliminary phased approach; they may be prioritized for vaccine contemporaneously when/if safety and efficacy data are available with the appropriate ACIP recommendation.

Stronger Together - Updates for Businesses

Jefferson County Business Lobby Update



Of most import to JeffCo's business community, two bills provided some modest relief to small businesses hardest hit by the State's occupancy limits. That included:

HB20B-1004 – This bill permits restaurants, brewpubs, bars and other food and alcoholic beverage businesses (see link to the bill for the full list) to deduct up to \$70,000 in sales each month from state sales tax remittances (that's a max of about \$2,000) for the four months lasting from November, 2020, to February, 2021.

SB20B-001 – Taking a slightly different approach, this bill creates a \$37 million one-time grant program to certain businesses to be distributed by counties starting in February. Grants to arts and cultural institutions and minority-owned businesses were also made available.

Grants are only available in counties at the Red Level on the State's dial framework as of December 31st. Businesses in those counties with less than \$2.5 million in receipts can apply for up to \$7,000, depending on actual size. See the bill link above for the full list, but eligible types of businesses include restaurants, bars, breweries, wineries, taverns, caterers, movie theaters, gyms and rec centers.



Rotary Opens Opportunities

Rotary unites people from all continents and cultures who take action to deliver real, long-term solutions to our world's most persistent issues. Through volunteering, our 1.2 million members from 35,000 clubs make lifelong friendships that transcend political and cultural boundaries and foster global understanding and respect.

Solving real problems takes real commitment and vision. Each year, Rotary members invest hundreds of millions of dollars and countless volunteer hours to promote health, peace and prosperity in communities across the globe.

Rotary members take action by providing access to clean water and sanitation, supporting education, preventing and treating disease, saving mothers and children and growing local economies.



You're Invited

Evergreen Rotary means business! We have over 100 businesses and community leaders who can help you and your business GROW.

If you'd like to join our club's weekly meetings – either by Zoom or in person (with social distancing) – on Friday mornings, call or email Chuck Adams: chucka@1updrones.com or 972-567-2059

What is the Rotary sponsorship program? If you would like to know more, please call or email Tim Grace: Cell 303-926-5894. Email—Tim.Grace@N2Pub.com

Contribute to The Mountain Backpack Program



At Daddy's Homemade, we're third generation Coloradans and second generation to Evergreen, a place we are proud to call home. And with beautiful Evergreen Lake as the anchor to our tight knit community, we believe in supporting our local nonprofits, schools, and businesses. By helping one another succeed, we will ensure Evergreen can grow and thrive for our children's future and beyond.

The Mountain Backpack Program is a crucial food assistance program that provides services for students living in West Jefferson and Clear Creek Counties. Daddy's Homemade is accepting food donations at its events when able, or you can contribute directly to the program. Your financial contribution will help provide meals for hundreds of students living in our beautiful mountain community.

Top Wishlist items are: cereal, crackers, hearty soups, Chili, Knorr rice or similar, pancake mixes, syrup, jelly, etc.

Ice Skating at Buchanan Ponds Open



New for Winter 2020 - 2021!

Ice skating is now available at the Buchanan Ponds!

- Each ice rink will be limited to 10 people. You must maintain 6 feet of distance between households.
- Tickets will be sold in advance by time slots - online only. **No walk-up ticket sales.**
- Parking will be available at Buchanan Park Rec Center.
- EPRD will use every other rink at staggered times to abide by health orders to maintain 50 feet between groups.

Always call the Skating Hotline 720-880-1391 before heading to Evergreen Lake or Buchanan Ponds as fluctuating weather can affect hours of operation.

Bring your own skates as no skate rentals will be available at Buchanan Ponds

Holiday Lights Recycling at IREA



Getting rid of old, unwanted string lights this holiday season? Don't throw them out. Bring them to any IREA location starting Dec. 1. **We will recycle them and donate the proceeds to Energy Outreach Colorado.**

We will accept lights Dec. 1 through Jan. 29 – excluding Christmas and New Year's Days – at each of our four offices. Lights must be free from all packaging to be accepted.

Closest IREA office is the Conifer Branch: 13404 Old U.S. Highway 285 Pine, CO 80470

Upcoming Chamber Events

Chamber Member Breakfast



Wed. January 6th, 2021 8:00- 9:00 am
Virtual Meeting, Register for Link.

Come join us to hear from our Board of Directors. Find out what's new with the Evergreen Chamber, network, and learn tips on how to grow your business. Please Register in Advance for breakfast at Evergreenchamber.org

Thank You To Our Breakfast Sponsor:



Mark Your Calendars: Next Chamber Member Breakfast after this one will be February 3rd

A Story Book Holiday in Evergreen

November 22—December 31
Various Locations in Evergreen

This ice extravaganza brings favorite holiday stories alive through a series of beautiful, life-size ice sculptures staged throughout Evergreen.



Santa Readings



Rudolph The Red-Nosed Reindeer
Thurs. December 18th 6:00 pm
Evergreen Chamber Facebook Page and Youtube Channel

T'was the Night Before Christmas
Thurs. December 24th 6:00 pm
Evergreen Chamber Facebook Page and Youtube Channel

Valli Crockett | Bergen Peak Realty



Interview with Valli Crockett, Broker, Owner and Realtor

Evergreen, 80439
(303) 956-2437
bergenpeakrealty.com



Q: What is unique about your business?

Bergen Peak Realty is a LOCAL boutique real estate company founded, owned, and operated by Evergreen women since 2007. I'm truly honored to take the helm.

Q: How has being a member of the Evergreen Chamber helped your business?

Evergreen is a relationship driven community. When I entered the real estate world in 2015, the first thing I did was join the Chamber. Being a member has helped me create many meaningful personal and business relationships. I feel so strongly about the Chamber's critical role in supporting our community and businesses, I became a Chamber Membership Coordinator. I'm also on the Chamber Ambassador Team.

Q: What services do you offer?

AlphaPixel Reach started helping others and that is what we do to this day through our community service, pro-bono Bergen Peak Realty is a full-service real estate firm with top-notch customer service. I represent both residential and commercial buyers and sellers. My Realtor® designation holds me to higher ethical and customer service standards. Being a Certified Mountain Area Specialist is extremely important when working in the foothills and mountain areas.

Q: What's new with your business?

I moved my office from downtown Evergreen to the Stone House Business center this past summer. Being housed in the Chamber office marries my two passions perfectly. I truly appreciate the support of my amazing clients and power partners during this unprecedented year. Wishing everyone a spectacular 2021.

Welcome New Chamber Members



Majestic Sky Web Design, Hosting & Development

Offering secure and fast managed cloud web hosting, email support, custom web design, logo design, website maintenance, Wordpress with personalized service.

Chuck Angerman - Owner
425 3rd Street #1024
Berthoud, 80513
(303) 503-8612
majesticsky.com

Milou Salon

At Milou Salon, we offer incredible hair and salon services along with the best massages and facials in Evergreen. We pride ourselves on providing the highest quality of service to our clients.

Sommer Penny - Owner & Stylist
1552 Bergen Parkway
Evergreen, CO 80439
(303) 679-106
milousalon.com



Ribbon Cuttings



Evergreen Sustainability Alliance

Evergreen Sustainability Alliance (formerly EAS+Y) is a nonprofit with the mission to foster local, sustainable solutions for waste streams, energy use, and food sources in the Evergreen foothills.

Ginny Ades - President
Evergreen, CO
(720) 536-0069
sustainevergreen.org



The Design Center

One Historic location, 12 unique design shops all focusing on services for your home including furniture, rugs, flooring, garden center, framing, kitchen, art and gifts.

Kay D'Evelyn La Montagne - owner
27965 Meadow Drive
Evergreen, CO 80439
(303) 674-3345
evergreendesigncenter.com



Easy Entrees by Silver Spoons

Locally sourced, chef curated meals you make at home. Try one of our meal kits tonight or grab one of our "Easiest Entrees" for an easy, no cooking require healthy meal option. Catering available.

Laura Squires- Owner/Operator
Evergreen, CO 80439
(303) 925-0505
ezentrees.com



Anthony's Pizza & Pasta

New York style pizza, pasta dishes, sandwiches, salads, and desserts in Evergreen. Offering delivery, dine-in, carryout, catering, and corporate functions.

Glen Fountain - Owner
3719 Evergreen Parkway
Suite A-105
Evergreen, CO 80439
(303) 674-4322
iloveanthony.com



Mountain Zoom Food Delivery

Food delivery service for Evergreen restaurants and eateries.

Glen Fountain - Owner
3719 Evergreen Parkway
Suite A-105
Evergreen, CO 80439
(888) 481-ZOOM
mountainzoom.com



Evergreen Deli

Fresh sliced meats and cheeses served on house-baked breads, muffins and desserts. Box meals and catering available.

Glen Fountain - Owner
3719 Evergreen Parkway
Suite A-105
Evergreen, CO 80439
(888) 481-ZOOM
evergreendeli.com



King Soopers

Retail Grocery Chain.

Jeremy Weadick - Assistant Store Manager
1173 Bergen Pkwy
Evergreen, CO 80439
(303) 674-8249
kingsoopers.com



Linda McConnell / Compass Real Estate

Residential listings spanning from Denver West Foothills to Evergreen & beyond you are sure to find the home you are looking for! Certified Mountain Area Specialist Realtor. Celebrating 10 Years selling in our Mountain Community.

Linda McConnell - Realtor
200 Columbine Street
Evergreen, CO 80439
lindamcconnell.com
(303) 718-7945

Celebrating a GRAND RE-OPENING, EXPANSION, or ANNIVERSARY?

Take advantage of this free advertising opportunity to let the community know!

Photos from Ribbon Cutting Event appear on our Facebook, Instagram, Twitter, Website, in our Monthly Newsletter, and in the Mountain Connection Newspaper.

Contact Clair Hicks, Operations Manager, at admin@evergreenchamber.org



Meet Your Chamber Ambassador Team!

New Ambassadors to be featured every month, stay tuned!



Carol O'Brien—Carol O'Brien Architecture, LLC

Carol O'Brien Architecture designs residential and commercial projects that are practical and fun. As a certified LEED AP, Carol employs a thoughtful understanding of sustainable design, together with the client's individual values, to create architecture that can be enduringly admired and enjoyed. She loves helping people achieve their design goals. Carol has practiced architecture since 1984. Licensed in CO, CA, and MN, Carol O'Brien Architecture was established with the ambition of making your architectural dreams a reality. Carol, a graduate of the University of Minnesota, School of Architecture, has also served on various AIA (The American Institute of Architects) committees.

Carol enjoys spending time with her family, bicycling, skiing, and volunteering. She loves living in the foothills and adventuring to new areas in the mountains.

Carol O'Brien - Architect/Owner
Golden, CO 80401
(612) 247-3639
cobrienarch.com



Mary Weatherilt—Keller Williams Foothills Realty

Mary Weatherilt represents sellers and buyers as a reliable and trustworthy realtor covering the Denver Metro area and Foothills area which includes Evergreen, Conifer, Morrison, Pine and Bailey.

With several years of sales, leadership, marketing and contract negotiations experience; she prides herself on the integrity, knowledge, tenacity, and networking skills required for this profession. Selling or buying a home can be a stressful time for many and there are problems and pitfalls around every corner. A great realtor can navigate and guide you through it and this is my primary focus. I'm here as your professional trusted advisor. Her top priority is to provide clients with exceptional service, expertise and complete satisfaction.

Mary Weatherilt - Realtor
32214 Ellingwood Trail
Suite 100
Evergreen, CO 80439
(303) 886-1193
weatherilthomes.kwrealty.com

Interested in joining our Ambassador Committee?

Reach out to Janice Holmes, Ambassador Committee Chair at (303) 835-7877 for more information.

Thank You To Our Renewing Members

These members renewed their Chamber membership in November

1 + YEARS

All Son's Asphalt Sealcoating & Paving LL
AmeriGas Propane, LP
Anderson Insurance Agency LLC
Colorado Furniture
Evergreen Chamber Orchestra
Evergreen Design Center, The
Evergreen Lutheran Church
Image Marketing
Intermountain Humane Society (IMHS)
Jefferson County Housing Authority
John & Yvette Putt/Windermere Real Estate
JOY International
KC "Butler" Home Team
Kevin McGuire, MBA, Transamerica Financial
Loan Zone Mortgage LLC | Karen F. Saxton,
MAPP Trap
Peggy and Lee Bertrand / HomeSmart Realty
Red Rocks Beer Garden
Roofing Outfitters
Swan Realty Group
Vivien's Gourmet

5 + YEARS

BookSense - "Making Sense of Your Books"
Cactus Jack's Saloon & Grill
Eagle Window of the Rockies, Inc.
Eisenbach Insurance
Gerou & Associates, Ltd.
Jeffco Public Schools
Keys on the Green
Morning Star Jewelers, Inc.
Myra Purkey / RE/MAX 100
ServPro of Golden, Wheat Ridge & Evergreen
Valli Crockett | Bergen Peak Realty

10 + YEARS

Cornerstone Auto Glass, Inc.
Evergreen Spine & Sports Medicine
The Pines at Genesee

15 + YEARS

Williams Orthodontics

20 + YEARS

Mountain Hearth & Patio
Mountain Realty & Development, Inc.
Ovation West Performing Arts
Scripps, Taylor & Associates, PC

25 + YEARS

Huff Insurance and Financial Services
Tallgrass Aveda Spa & Salon

30 + YEARS

Kittredge Auto Rebuilders

THANK
YOU

*from your
Evergreen Chamber Staff*

Nancy Judge
Erin Rosch
Clair Hicks
Patti Morris
Courtney Thorud
Valli Crockett
Jackie Mohr
Marie Lynch

President/CEO
Marketing Manager
Operations Manager
Accounts Manager
Events & Special Projects Mgr.
Membership Coordinator
Skate The Lake Event Mgr.
Skate The Lake Volunteer Mgr.